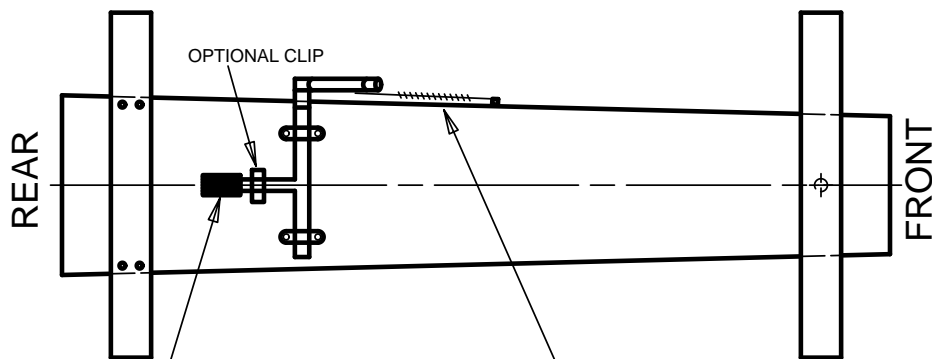


***IT IS HIGHLY RECOMMENDED THAT STEERING, BRAKE, OR OTHER FUNCTIONAL COMPONENTS BE ATTACHED BY THROUGH-BOLTING.**

-VIEW OF BOTTOM OF CAR-



HEAVY RUBBER PAD
"BRAKE SHOE"

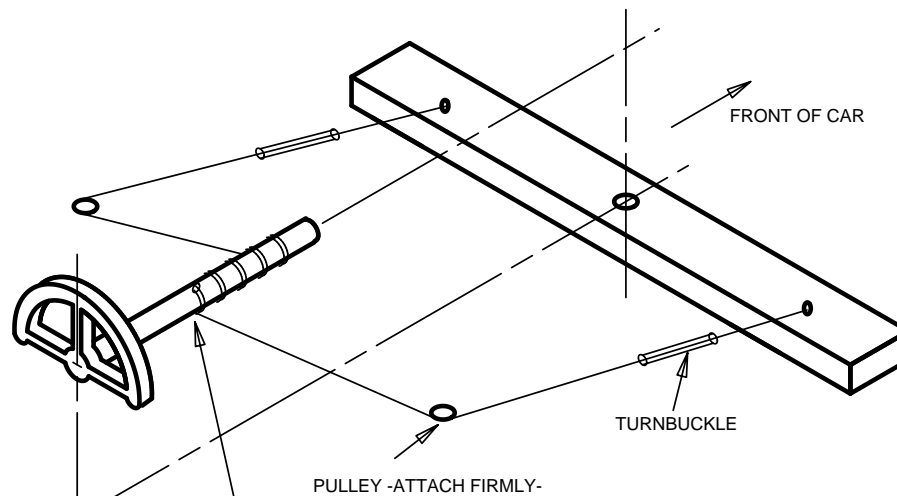
BRAKE LEVER HANDLE SHOULD BE
A MINIMUM OF 12" LONG FOR
PROPER LEVERAGE

RETURN SPRING (FIRMLY
ATTACHED TO BODY/FRAME)

-SIDE VIEW-

"BRAKE SHOE" TO BE LOCATED IN CAR'S CENTERLINE TO PREVENT
CAR VEERING TO SIDE WHEN BRAKE IS APPLIED.

FIGURE 3: SUGGESTED BRAKE ASSEMBLY



CABLE PASSES THROUGH A HOLE DRILLED IN THE STEERING COLUMN
AND WRAPS ONTO BOTTOM OF THE STEERING COLUMN, SO
THAT CAR STEERS IN THE DIRECTION THE WHEEL IS TURNED.

(CABLE WRAP IS SHOWN "EXPANDED" FOR CLARITY OF
THIS SKETCH. IN REALITY, IT WILL BE TIGHTLY WOUND
AROUND COLUMN).

FIGURE 4: SUGGESTED STEERING ASSEMBLY

NOTES:

1. CAR DESIGN OPTIONAL
2. ONLY BASIC COMPONENTS ARE SHOWN.

NEW BERLIN SOAP BOX DERBY COMMISSION

**SUGGESTED BRAKE AND
STEERING ASSEMBLIES**

**SCALE:
NONE**

FIGURE 3 & 4

05/10/06